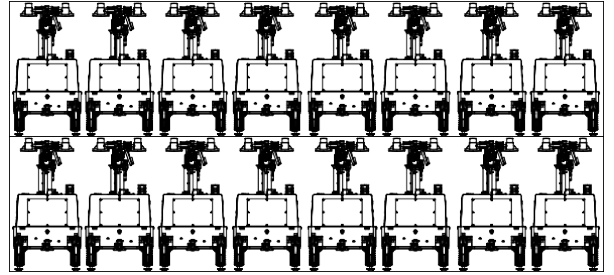


## MLT4YCD-4000LD-1

Powered by Raywin



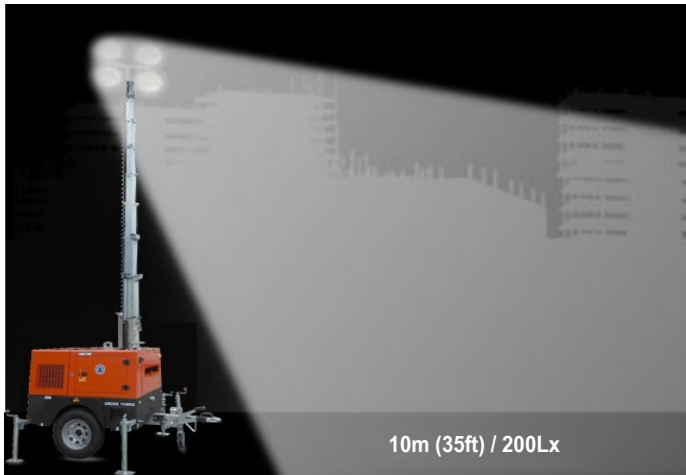
15U. / 40 'HC. CONTAINER



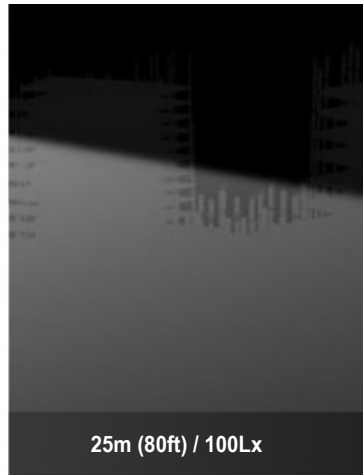
### ✓ Highlights

- Less fuel consumption. Longer run-time
- Simple control system
- High efficiency
- Sturdy and durable
- Max height 7.2m

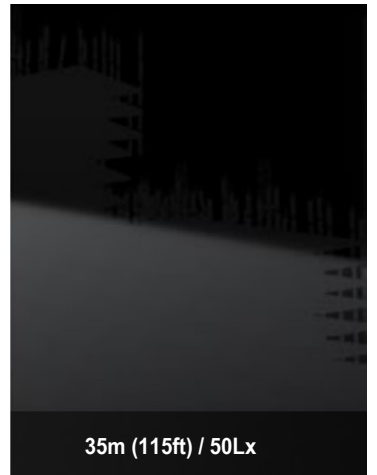




10m (35ft) / 200Lx



25m (80ft) / 100Lx



35m (115ft) / 50Lx

## Lighting Tower Technical Data

Power Package Rated Power	6KW
Number & Power of Lamp	4×1000W
Rated Frequency/ Speed	50Hz /1500 rpm
Rated Voltage	AC 230V
Noise	65dB(A) @7M
Mast-Maximum Height	7.2M
Mast Lifting & Extension	Manual Operation
Fuel level gauge	Electronic
Tower leg type	Manual
Trailer Load bearing	900KG
Trailer type	Off road type
AUX. Power output	32A/3P Socket
Rotation angle range of light	355°
Wind resistance grade	65km/h
Recommended use environment	Level ground

## Lamp

Number×Power	4×1000W
Lamp type	Metal halide lamp
Protection Glass	IP44
Luminous Efficiency	75Lm/W
Color Temperature	4200 K
Voltage	AC 240V
Lamp service life	10000hrs

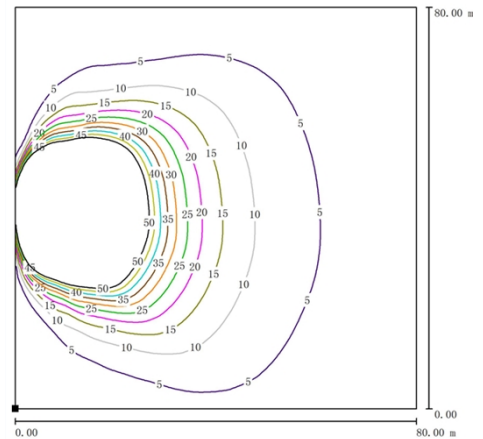
## Control System

Controller Model	MALC404
------------------	---------

## Dimension and Weight

Max Overall Dimension (L×W×H)	3060×2310×7200 mm
Container loading Dimension (L×W×H)	1550×1100×2450 mm
Tank Capacity / Running Hr.	100 L / 75 hrs.
Weight	810 kg
The loading capacity(40'HC)	15 Sets

Note: Specifications and illustrations are subject to revision without notice.



## Environmental Conditions

- Ambient temperature: +5°C~+40°C
- Altitude: ≤1000m

**Note:** Please contact us if operating environmental conditions required do not go with the guidance.

## Factory Inspection

- Complete design and quality inspection
- 30 mins full load test
- Function testing
- Protection testing

## Painting Process

- MPMC has the most advanced automatic spraying / powder coating production line, and is equipped with various sandblasting equipment to ensure higher quality.
- Canopy painting: HenKel pretreatment process and world famous brand AkzoNobel powder.
- Base Frame painting: Sandblasting process and AkzoNobel powder (Hempel paint is optional).



### Engine Specifications

Engine Model	3D11G3/A
Manufacturer	Raywin
Emission	EU Stage V
Number of Cylinders	3
Cycle	4 Stroke
Aspiration	Naturally
Prime Power / Speed (Gross)	9.1KW / 1500RPM
Lube-oil Capability	4.6L
Fuel consumption	≤290 g/kWh
Starter motor/ Alternator	12V 1.2kW

- Heavy duty diesel engine
- Anti-vibration mount
- Replaceable fuel filter, oil filter & air filter
- Cooling radiator and fan
- Starter battery (with lead acid) including rack and cables
- Flexible fuel connection hoses
- Exhaust silencer and bellows
- Operation manuals and circuit diagram document

### Alternator Specifications

Alternator Model	DP06-50
Manufacturer	Dingol
Rated Output Power	6KW
Alternator Type	Brushless
Rated Voltage	AC 230V
Rated Speed	1500 RPM
IP Protection	IP23
Insulation Grade	H

### OPTIONS




<input type="checkbox"/> Jacket water heater	<input type="checkbox"/> Manual pump
<input type="checkbox"/> Lub-oil heater	<input type="checkbox"/> Smartgen controller
<input type="checkbox"/> ABB/Schneider MCB	<input type="checkbox"/> Sockets
<input type="checkbox"/> Battery charger	<input type="checkbox"/> Larger fuel tank



**MPMC POWERTECH CORP.**  
sales@mpmc-china.com | www.mpmc-china.com

Photographs are for illustrative purposes only and may not reflect final configuration.

Follow us

-  <https://www.facebook.com/mpmcgroup>
-  <https://www.linkedin.com/company/mpmcpowertech/>
-  <https://www.youtube.com/user/MPMCGenerator>

All information in this document is substantially correct at time of printing and may be altered subsequently. Final weight and dimensions will depend on completed specification.